

MODELS FP5500CT / FP5500UC

Fresca Pure 5500™

by Royal Prestige®

WATER FILTRATION SYSTEMS



USE & CARE MANUAL



System Tested and Certified by WQA against NSF/ANSI Standard 42 (Aesthetics) for the reduction of Chlorine Taste and Odor, Chloramine and Nominal Particulate Class I; NSF/ANSI Standard 53 for the reduction of Lead, Cysts, VOCs, MTBE and Turbidity.

See performance data sheet for individual contaminants and reduction capabilities.



ROYAL
PRESTIGE®

IMPORTANT: Read and Save these Instructions.

Questions or Comments: Please refer to page 20

TABLE OF CONTENTS

INTRODUCTION	1
IMPORTANT USE GUIDELINES	1
OPERATING SPECIFICATIONS	3
REPLACEMENT PARTS DIRECTORY	4
GETTING STARTED	5
INSTALLATION: COUNTERTOP SYSTEM (Model: FP5500CT)	5
REPLACING THE CARTRIDGE: COUNTERTOP SYSTEM	6
INSTALLATION: UNDER-COUNTER SYSTEM (Model: FP5500UC)	9
DRILLING A HOLE IN A STAINLESS STEEL SINK.	10
DRILLING A HOLE IN A PORCELAIN/CERAMIC SINK	11
FAUCET INSTALLATION	12
SYSTEM INSTALLATION	13
REPLACING THE CARTRIDGE: UNDER-COUNTER SYSTEM	15
TROUBLESHOOTING	18
CUSTOMER SERVICE	19
SERVICE CENTERS	20

WHAT'S IN THE BOX

FRESCAPURE™ COUNTERTOP SYSTEM (MODEL: FP5500CT)



FRESCAPURE™ UNDER-COUNTER SYSTEM (MODEL: FP5500UC)



INTRODUCTION

Congratulations on the purchase of your new FrescaPure™ Drinking Water System! You have taken an important step toward improving the quality of your drinking and cooking water.

This System will serve you reliably for many years to come when operated and maintained according to the instructions in this manual. You have made a wise investment. Now, please take a few additional minutes to complete reading this manual, so that you may realize all the benefits your new FrescaPure™ Drinking Water System has to offer!

IMPORTANT USE GUIDELINES

1. Read this manual completely before attempting to install or use this product.
2. **DO NOT use this System with hot water.** Hot water may cause this System to malfunction and will void your warranty.
3. DO NOT mistake Red Collars and Tubes as a "hot" water feed line. This system is for use on cold potable water supplies only. *Color coding is only to ensure proper connections to the System "Inlet" and "Outlet" ports.*
4. Actual capacity of your System may vary from the rated capacity. This may be due to the volume of contaminants actually present in your water supply. To ensure best results, replace Filter Cartridge when the first of the following occurs:
 - Annually
 - The Display begins flashing RED (*indicating the rated capacity has been reached*)
 - The flow rate diminishes
 - You notice a taste or odor recurrence
5. Do not use with water that is microbiologically unsafe or of unknown quality without adequate disinfection before or after the System.
6. Systems certified for cyst reduction may be used with disinfected water that may contain filterable cysts.
7. Individuals requiring specific microbiological purity should consult their physician.
8. This System is not intended to convert wastewater or raw sewage into drinking water.
9. For this System to continue to perform as tested and represented, use only Genuine, WQA Certified, Royal Prestige Filter Cartridges.

10. Genuine, Royal Prestige Filter Cartridges may be purchased from your Independent Royal Prestige Representative. For additional purchase information, please contact the Royal Prestige Customer Service Center. (See page 20.)
11. After set-up and installation, DO NOT remove the Battery Shuttle except when replacing the Filter Cartridge. Removing the Battery Shuttle prematurely may result in a loss of stored data.
12. Be sure to replace the Battery Shuttle each time a new Filter Cartridge is installed. For your convenience, a new Battery Shuttle is included with the purchase of each new, replacement Filter Cartridge.
13. Do not allow System to sit for extended lengths of time without being used (10 days or more). If System must be left unused for more than 10 days, drain all water from the System and use sanitary gloves to remove the Filter Cartridge. Place Cartridge into clean plastic bag, seal and refrigerate. Once you return, re-install the Cartridge per the Replacement Instructions and continue to use.
14. This System must be protected from freezing. Failure to do so may result in loss of performance, damage to the parts and water leakage. If System will be exposed to freezing temperatures, drain water from Housing and remove the Filter Cartridge.
15. **The FP5500UC Under-Counter System is designed to work only with the special vented faucet provided. Use with a standard non-vented faucet may cause the System to malfunction and will void your warranty.**
16. Installation of this product must comply with all state and local laws and regulations. Refer to your local agencies for details.


DRINKING WATER SYSTEM SPECIFICATIONS

COUNTERTOP SYSTEM (MODEL: FP5500CT)

Installation	Countertop
Rated Capacity	1,000 Gallons (3,785 L)
Replacement Filter Cartridge	RC-50-FP
Monitor	Electronic LED
Rated Service Flow @ 60 psi	0.75 Gal/min (2.84 L/min)
Housing Construction316 Surgical Stainless Steel
Lid Construction	Polypropylene (PP-GF)
Maximum Working Pressure	100 psig (689.5 kPa)
Minimum Working Pressure	30 psig (206.8 kPa)
Maximum Operating Temperature <i>(for cold water use only)</i>	100° F/38° C
Minimum Operating Temperature	40° F/4° C
Particle Retention Size	0.5 microns
EPA Establishment Number	63018-NV-001

UNDER-COUNTER SYSTEM (MODEL: FP5500UC)

Installation	Under-Counter
Rated Capacity	1,000 Gallons (3,785 L)
Replacement Filter Cartridge	RC-50-FP
Monitor	Electronic LED
Rated Service Flow @ 60 psi	0.75 Gal/min (2.84 L/min)
Housing Construction316 Surgical Stainless Steel
Lid Construction	Polypropylene (PP-GF)
Maximum Working Pressure	100 psig (689.5kPa)
Minimum Working Pressure	30 psig (206.8kPa)
Maximum Operating Temperature <i>(for cold water use only)</i>	100° F/38° C
Minimum Operating Temperature	40° F/4° C
Particle Retention Size	0.5 microns
EPA Establishment Number	63018-NV-001



System Tested and Certified by WQA against NSF/ANSI 42 (Aesthetics) for the reduction of Chlorine Taste and Odor, Chloramine and Nominal Particulate Class 1; NSF/ANSI 53 for the reduction of Lead, Cysts, VOCs, MTBE and Turbidity.

See included performance data sheet for individual contaminants and reduction performance.

REPLACEMENT PARTS DIRECTORY

FRESCAPURE™ COUNTERTOP SYSTEM (Model: FP5500CT)



ITEM	PART NUMBER	DESCRIPTION
1	RP6150	Enclosure Cover <i>(with LED Display)</i>
2	RP6166	Housing Lid
3	RP6153	Gasket
4	RP6154	Housing Clamp <i>(includes Knob & T-Bolt)</i>
5	RP6155	Stainless Steel Filter Housing
6	RP6163	Enclosure
7	RP6176	Diverter Valve Assembly
8	RP0160	Faucet Adapter Kit <i>(3 pieces)</i>
9	RP6157	Collar Release Tool
10	RP6158	Battery Cover
11	RP4547	Battery Shuttle <i>(includes Battery)</i>
12	RP6159	Flow Monitor <i>(includes Battery & Shuttle)</i>
13	RC-50-FP	Filter Cartridge

FRESCAPURE™ UNDER-COUNTER SYSTEM (Model: FP5500UC)



ITEM	PART NUMBER	DESCRIPTION
1	RP6166	Housing Lid
2	RP6153	Gasket
3	RP6154	Housing Clamp <i>(includes Knob & T-Bolt)</i>
4	RP6155	Stainless Steel Filter Housing
5	RP6164	Base
6	RP6161	Faucet Kit <i>(includes):</i>
7	-	- Dedicated Water Faucet
8	-	- Monitored Beauty Ring
9	-	- Spacer
10	RP0001	- Wing Nut
11	RP6162	T-Valve
12	RP4547	Battery Shuttle <i>(includes Battery)</i>
13	RP6159	Flow Monitor <i>(includes Battery & Shuttle)</i>
14	RP6157	Collar Release Tool
15	RC-50-FP	Filter Cartridge

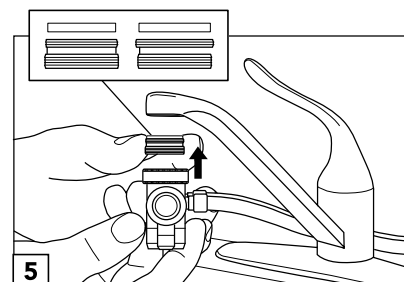
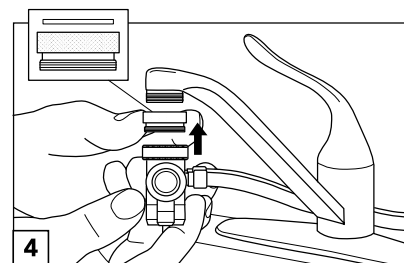
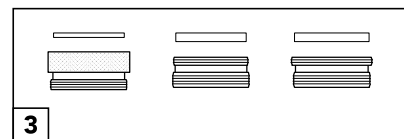
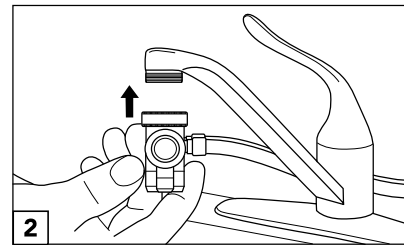
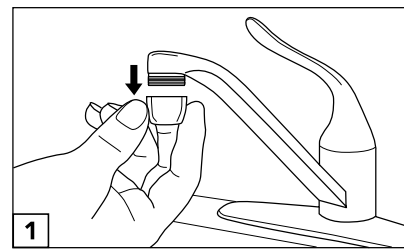
NOTE Components that are included with this System are capitalized throughout this manual to distinguish between System Components and existing plumbing connections.

GETTING STARTED

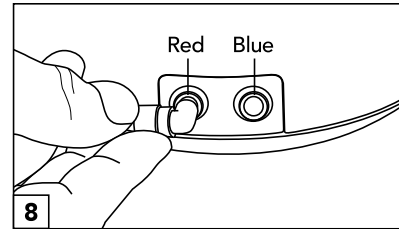
1. Determine which model you have.
2. Open the shipping carton, remove all FrescaPure™ Drinking Water System parts and place them on your kitchen counter.
3. Compare them with the parts shown on the “What’s In the Box” section on the inside front cover to familiarize yourself with the System.
4. Follow the instructions for the FrescaPure™ model that you have.

INSTALLATION: COUNTERTOP SYSTEM (Model: FP5500CT)

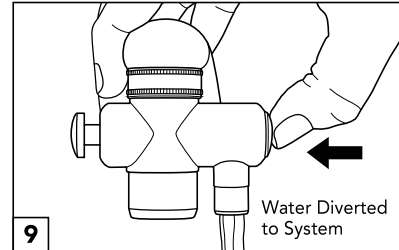
1. Unthread and remove the aerator from the end of your kitchen faucet if it has one.
2. Thread the Diverter Valve directly onto your kitchen faucet. **Do NOT over-tighten.**
3. If the threads to the Diverter Valve do not directly attach to your kitchen faucet, use one of the three Adapters provided.
4. Most kitchen faucets with external threads will directly attach to the Diverter Valve. In some instances the Diverter Valve may be smaller than your kitchen faucet. In this case use the Adapter with internal threads and thread it directly to your kitchen faucet. Next, thread the Diverter Valve to the Adapter.
5. If your kitchen faucet has internal threads, thread one of the two Adapters with external threads directly to your kitchen faucet. Next, thread the Diverter Valve to the Adapter.
6. If your kitchen faucet does not have threads, measure the inside diameter of your faucet and provide this information to your Authorized Royal Prestige Distributor or the Royal Prestige Customer Service Center (see page 20). *Be sure to request an Expandable Adapter.*
7. If your kitchen faucet does not fit any of the Adapters provided, call the Royal Prestige Customer Service Center (see page 20) to request a suitable adapter.



8. Push the Blue and Red Tube ends on Diverter Valve Assembly into Blue "Outlet" and Red "Inlet" Collars located on the back of System Enclosure. Lightly tug on Tubes to ensure they are securely connected.



9. Position the System next to your sink. Turn the cold water "ON" and position the Diverter Valve Slider to divert water into System. Water will begin filling the System. Upon initial start-up, the Display will begin blinking GREEN, YELLOW and RED five (5) times before continuing to blink GREEN, indicating peak operational performance. Check that all hose, clamp and housing connections are tight and do not leak.



10. When using the System for the first time, or whenever a new Filter Cartridge is installed, allow the System to flush into the sink for fifteen (15) minutes. This will expel trapped air and condition the Cartridge for normal use. (This water may be used to water your plants.)

CONGRATULATIONS! Your new FrescaPure™ System is ready for use!

REPLACING THE FILTER CARTRIDGE: COUNTERTOP SYSTEM

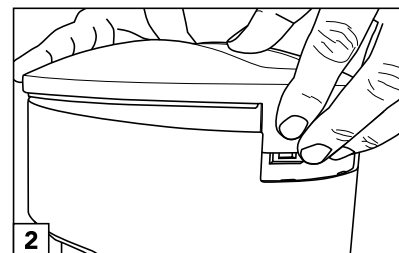
The most important part of maintaining your FrescaPure™ Drinking Water System is replacing the Cartridge on a regular service interval. To ensure best results, the Cartridge should be replaced upon the first occurrence of one of the following conditions:

- Annually
- When the Display begins flashing RED (*indicating the rated capacity has been reached*)
- When the flow rate diminishes
- When you notice a taste or odor recurrence

IMPORTANT

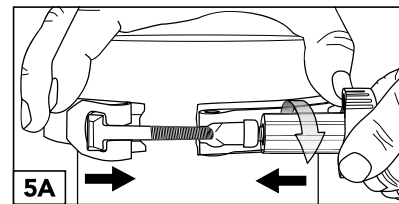
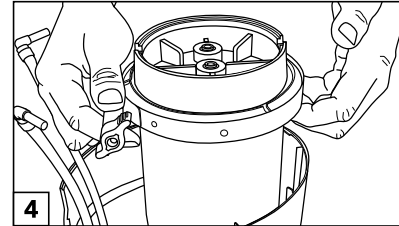
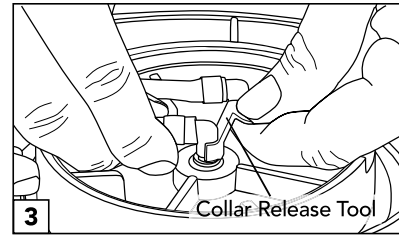
Insist on Genuine, WQA Certified, Royal Prestige Filter Cartridges. Only Genuine, Royal Prestige Cartridges have been tested and certified by the Water Quality Association to ensure the performance represented in the Performance Data Sheet. **Failure to use Royal Prestige Filter Cartridges and replacement components will invalidate your warranty.**

1. Place a towel or other soft cloth in sink.
2. With Faucet "OFF", lightly depress back of Enclosure Cover and lift upward to remove. Set Cover on counter. *It is not necessary to disconnect the black Monitor Cable that is attached to the Cover.*



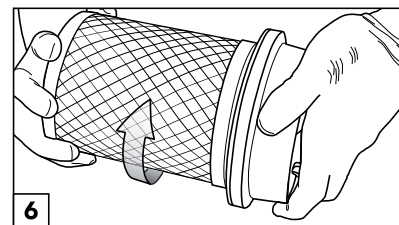
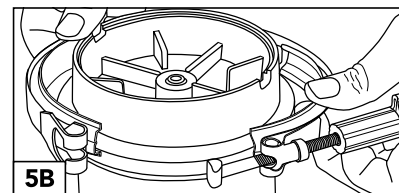
NOTE To release Tubing Fittings from Collars, a Collar Release Tool has been provided for your convenience.

3. Depress the Red "Inlet" Collar on Lid while pulling Fitting upward to remove. Repeat this procedure to remove fitting from Blue "Outlet" Collar.
4. Grasp Clamp and lift upward to remove Filter Housing from Enclosure. Set Filter Housing on towel in base of sink.
5. Turn Knob counterclockwise to loosen Clamp. Push Knob forward to unlatch T-Bolt from Clamp. Once Clamp is removed, lift Lid upward. This step will expose the Filter Cartridge.



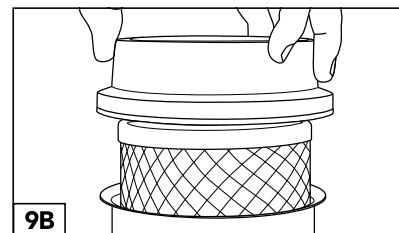
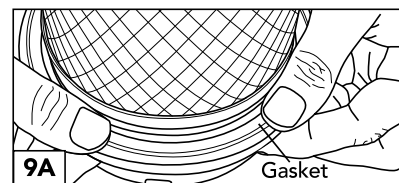
RECOMMENDATION Rubber gloves should be worn to avoid direct contact with contaminants removed by this System.

6. While holding Lid, turn Cartridge counterclockwise to remove. Wrap in newspaper and discard with normal refuse.
7. Wash the inside of the Housing and Lid with warm water and a mild dish washing detergent. Rinse well and dry with a clean cloth.

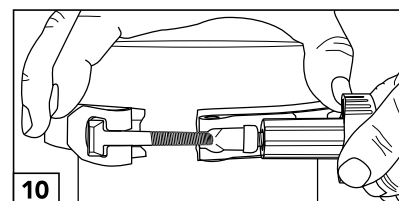


CAUTION Do not use abrasive pads or abrasive cleaners (including cleaners containing bleach) as this will result in scratching and damage to your System.

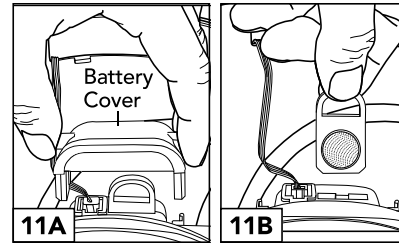
8. Remove the sanitary plastic wrap from the new Filter Cartridge. Thread the new Cartridge clockwise onto Lid until you feel resistance. Make an additional quarter turn. **DO NOT over-tighten.**
9. Make certain Gasket is firmly seated onto Lid. With new Cartridge connected to Lid, lower Cartridge into Housing and align with Housing.
10. Place Clamp around Lid and Housing. Push Knob forward to latch T-Bolt. Tighten Knob.



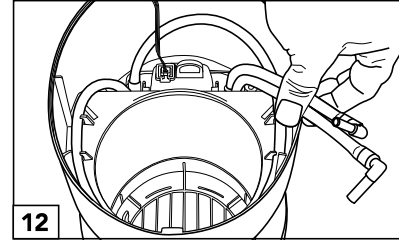
IMPORTANT ONLY REMOVE BATTERY SHUTTLE AT TIME OF CARTRIDGE REPLACEMENT. Removing Battery Shuttle prematurely may result in a loss of stored data. A new Battery Shuttle is included with every Genuine, WQA Certified, Royal Prestige Filter Cartridge.



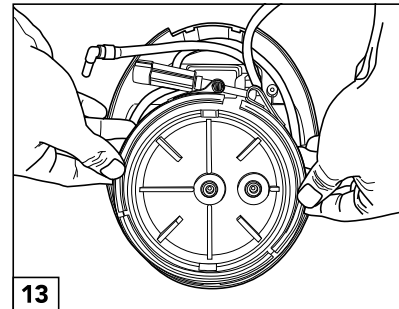
11. To access the Battery Shuttle, slide Battery Cover upward and set on counter. Remove old Battery Shuttle from Monitor and discard. Insert new Battery Shuttle and re-install the Battery Cover.



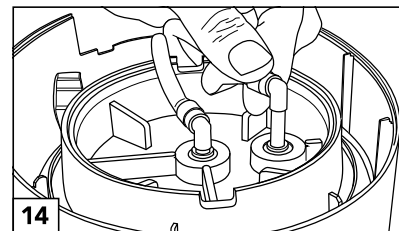
12. Orient Tubing and Monitor Cable in Enclosure so that the Filter Housing can be lowered into the Enclosure without interference.



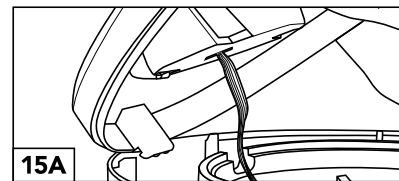
13. As you lower the Filter Housing into the Enclosure, be certain to orient the Knob towards the back of the Enclosure.



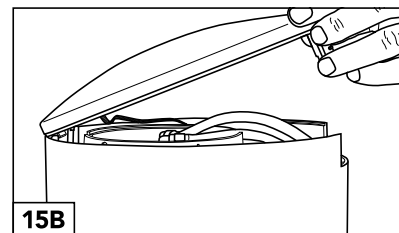
14. Push the Blue Tubing end into Blue "Outlet" Collar located on Lid. Push the Red Tubing end into Red "Inlet" Collar located on Lid. Tug both Tubes lightly to ensure they are securely in place.



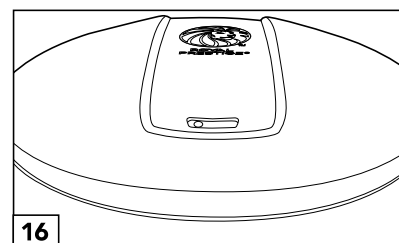
15. Tuck the Monitor Cable inside the Enclosure. Hinge Cover to front of Enclosure as shown, then press rear portion of Cover into place. Position the System next to your sink.



16. Slowly turn cold water "ON" and position the Diverter Valve Slider to divert water into the System. Water will begin filling the System. Upon initial start-up, the Display will begin blinking GREEN, YELLOW and RED five (5) times before continuing to blink GREEN, indicating peak operational performance. Check that all hose, clamp and housing connections are tight and do not leak.



17. When using your System for the first time, or whenever a new Cartridge is installed, allow the System to flush into the sink for fifteen (15) minutes. This will expel trapped air and condition the Filter Cartridge for normal use. *(This water may be used to water your plants.)*



INSTALLATION: UNDER-COUNTER SYSTEM (Model: FP5500UC)

CAUTION Using power tools near water may result in electrical shock or even death. Be certain that sink area is dry prior to using any power tool.

IMPORTANT If you are experienced in this type of installation and choose to install yourself, please proceed with extreme caution. If you have any doubts about doing this yourself, please consult a licensed plumber.

If your sink has an existing hole at least 1" in diameter that is being used for a spray attachment or soap dispenser, you may decide to remove it and use the existing hole to continue your installation. ***(Skip the next section and go to "Faucet Installation" on page 12.)***

If your sink **DOES NOT** have an existing hole at least 1" in diameter, a new hole will need to be drilled.

The type of plumbing that you have in your home will determine the method of installation and the type of hardware to be used. Below is a list of common tools required for most under-counter installations:

Drilling a Hole in a Porcelain/Ceramic Sink:

- 3/8" Variable-Speed Electric Drill
- Relton™ 1" Porcelain Cutter Kit (PC-16)
(Visit www.relton.com for purchase information.)
- Masking Tape

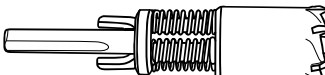
Drilling a Hole in a Stainless Steel Sink:

- 3/8" Variable-Speed Electric Drill
- 1/8" Drill Bit
- 1" Hole Saw
- Masking Tape
- Hammer
- Punch

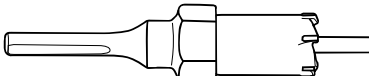
Relton™ Porcelain Cutter Kit includes:



Carbide-Tipped Pilot Drill



Spring-Loaded Porcelain Saw



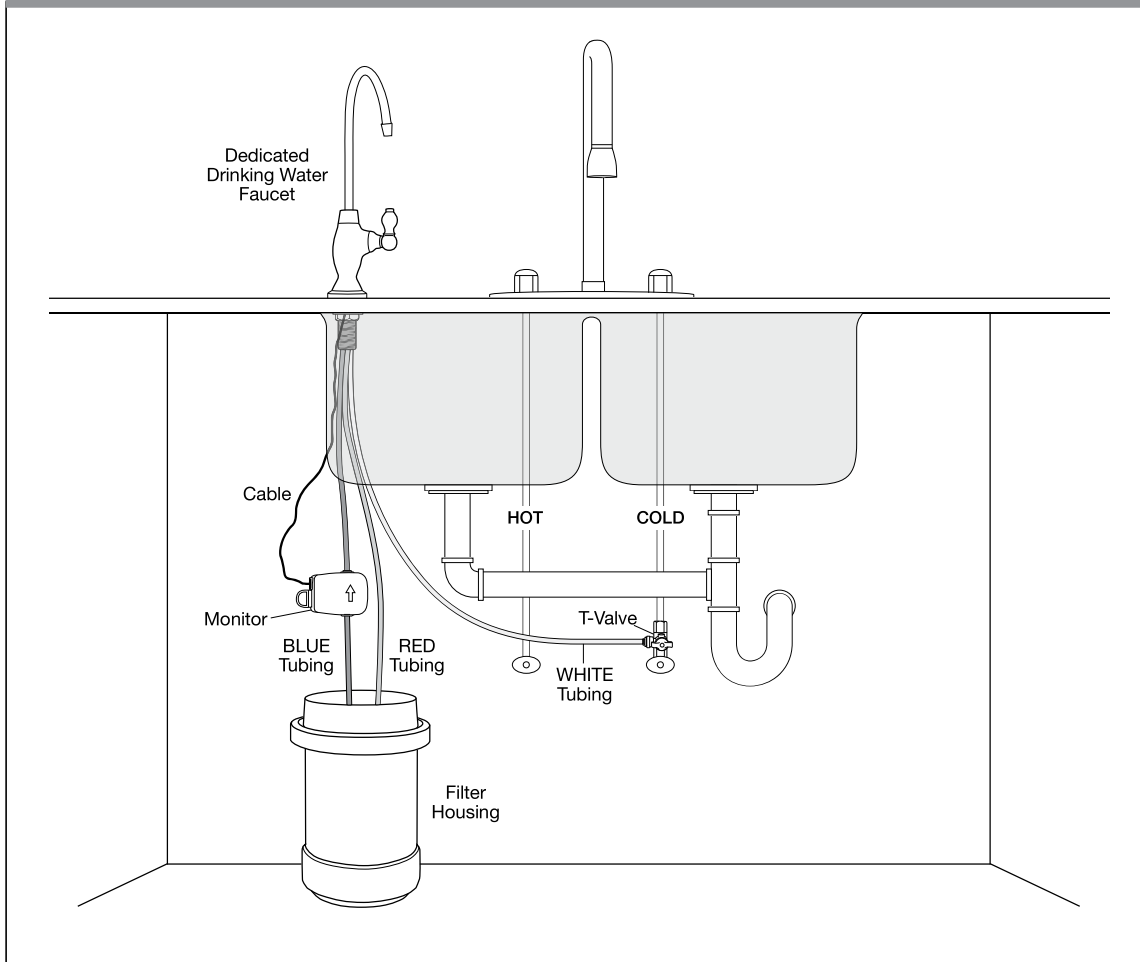
Finish Hole Saw

Installing the T-Valve and Dedicated Drinking Water Faucet:

- 5/8" and 3/4" Open End Wrenches or Adjustable Wrench
- Tubing Cutter or sharp Utility Knife

WARNING The Universal Plumbing Code, and other state and county codes prohibit the use of saddle valves. We also do not recommend their use. You must adhere to your state and local plumbing codes. If you are uncertain, consult a licensed plumber.

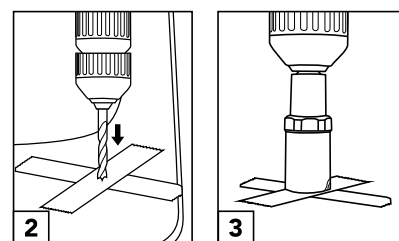
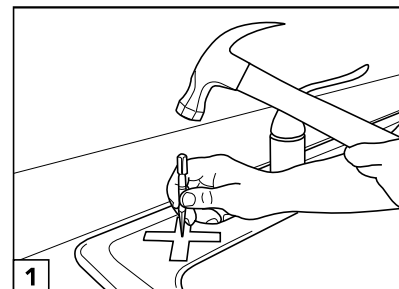
TYPICAL UNDER-COUNTER SYSTEM INSTALLATION



DRILLING A HOLE IN A STAINLESS STEEL SINK:

CAUTION This type of sink can be scratched very easily. Use extreme care. If you have any doubts about doing this yourself, consult a licensed plumber.

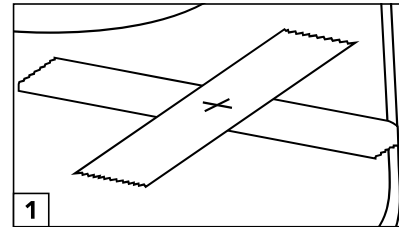
1. Locate an area on your sink to install the Dedicated Drinking Water Faucet. (Make certain there are no support ribs under the sink in that area.) Cover the designated location for the faucet installation on sink with masking tape. Use the punch and hammer to make a light indentation at the designated faucet installation location.
2. Using a 1/8" high speed drill bit, drill a pilot hole in the sink.
3. Use a 1" hole saw to enlarge the pilot hole to final size.



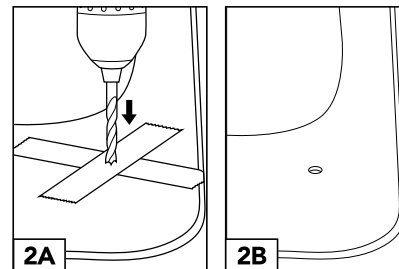
DRILLING A HOLE IN A PORCELAIN/CERAMIC SINK:

CAUTION This type of sink can chip very easily. If you have any doubts about doing this yourself, consult a licensed plumber.

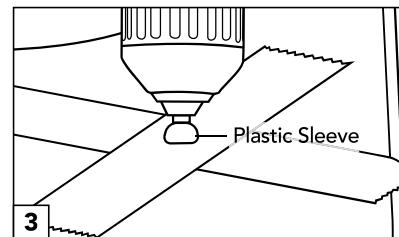
1. Locate an area on your sink to install the Dedicated Drinking Water Faucet. (Make certain there are no support ribs under the sink in that area.) Cover the designated location for the Faucet installation on sink with masking tape.



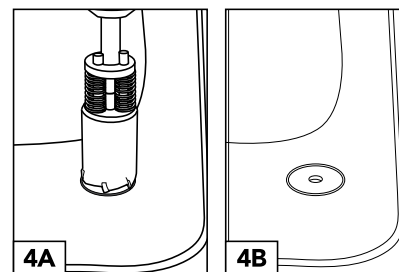
2. Using the carbide-tipped pilot drill supplied with the Relton Cutter Kit and a variable speed drill, slowly drill a pilot hole completely through the porcelain or enamel and metal base material.



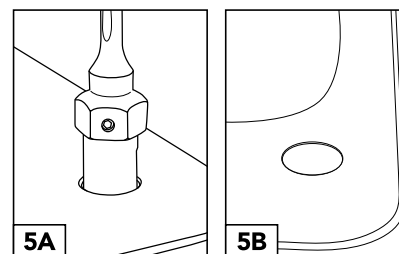
3. The plastic sleeve supplied on the pilot drill is to be positioned against the drill chuck after the pilot drill has been inserted. This prevents the drill chuck from contacting the porcelain after the pilot hole has been completed.



4. Change to the spring-loaded porcelain saw bit. Be sure the pilot guide supplied is inserted tightly into the porcelain saw. With light pressure applied to the porcelain saw, start the drill motor turning as slowly as possible; after the initial cut has started in the porcelain, the drill motor's R.P.M. may be increased. (Avoid high R.P.M.s during the initial penetration of the porcelain.) Three to four minutes may be necessary to cut the porcelain; a faster penetration rate could result in excessive chipping. Continue drilling until a complete ring has been cut through to the metal base.



5. Change to the finish hole saw bit. Be sure the pilot guide is inserted tightly. Begin to cut with slow speed and light pressure until porcelain (inside the ring cut by porcelain saw in Step 4) has been penetrated to the metal underneath. At that point, remove the hole saw from the hole and clean all chips from the porcelain surface. Reinsert the hole saw into the hole and cut through the remaining material.



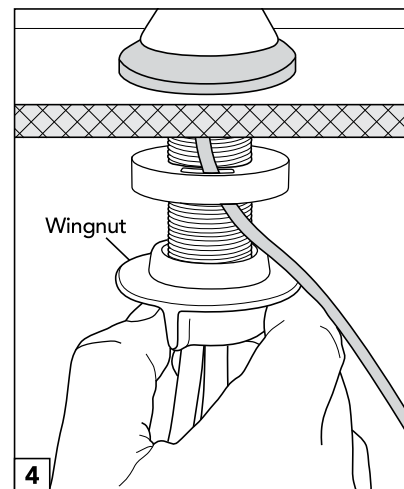
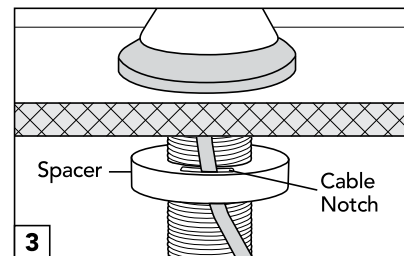
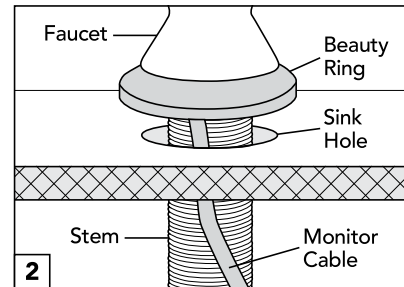
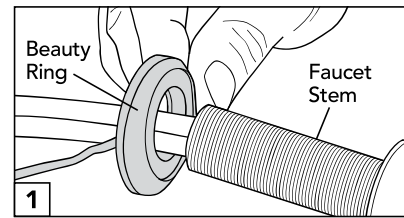
RECOMMENDATION Experiment on discarded porcelain to familiarize yourself with the action and performance of the porcelain cutter kit.

FAUCET INSTALLATION:

1. Slide the Monitored Beauty Ring up the Red, White and Blue Tubing, and onto the Faucet Stem.
2. Insert the Red, White and Blue Tubing (*along with Monitor Cable*) into the hole in sink, followed by Faucet Stem.
3. From under the sink, guide Monitor Cable through hole in the Spacer then slide Cable into the small notched area of Spacer. Next insert the Faucet Tubing through the hole in Spacer then slide Spacer onto Faucet Stem.
4. Insert the Red, White and Blue Tubing through Wingnut then thread Wingnut onto Faucet Stem. Align Monitored Beauty Ring to face the front of Dedicated Drinking Water Faucet before hand tightening the Wingnut.

IMPORTANT DO NOT slide the Monitor Cable through Wingnut.

RECOMMENDATION When tightening Wingnut, two people may be required to ensure proper alignment of Faucet and Monitored Beauty Ring.



SYSTEM INSTALLATION:

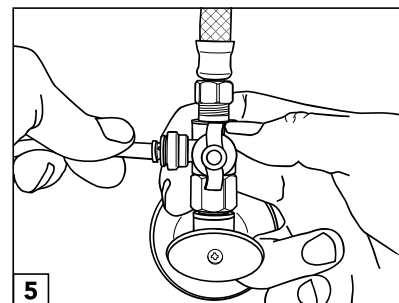
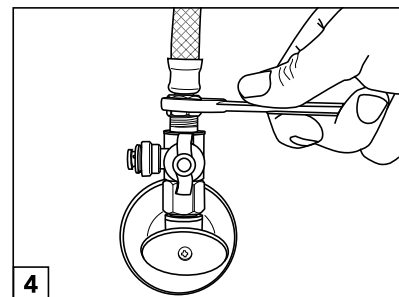
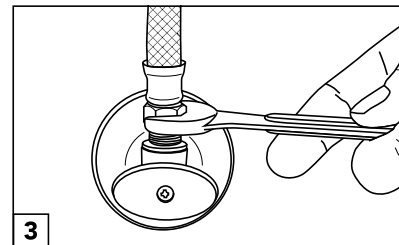
Read these instructions completely before starting System Installation.

Make a determination whether you will be able to make a "Typical" installation (as shown in the illustration on page 10) after looking at your under-sink cabinet area.

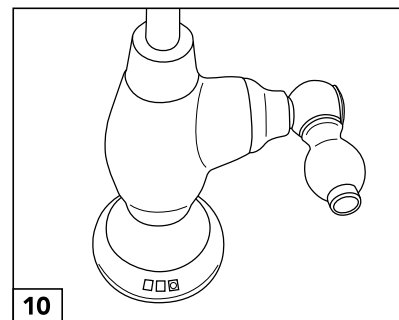
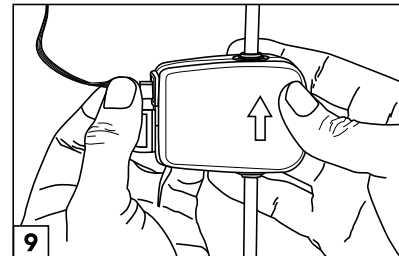
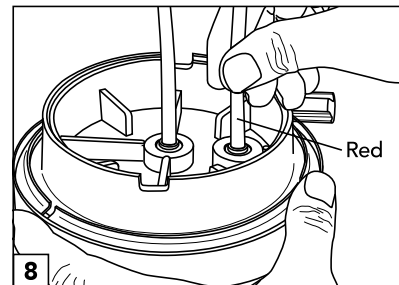
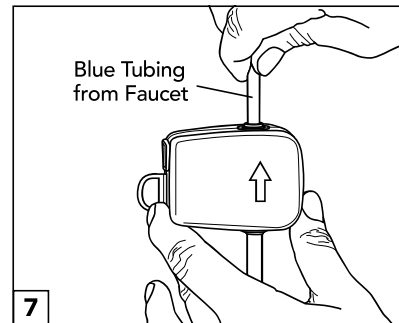
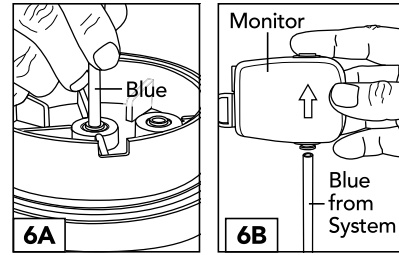
If the configuration of your under-sink area does not permit a "Typical" installation, it will be necessary to develop one of your own. Be sure to take into consideration where the System will be permanently located in relationship to the cold water supply line and Dedicated Drinking Water Faucet. Make generous allowances for estimating the Tubing lengths required to make these connections. (Two Velcro Strips have been provided should you decide to mount the Monitor to the cabinet wall.)

WARNING DO NOT use copper tubing with the Collars installed on this System. Although it may appear that copper tubing will fit, water leaks will develop over time. If copper tubing is required, you must use copper compression fittings that must be purchased separately and adapted accordingly.

1. Before starting this installation, be certain to turn "OFF" the cold water supply located under your sink. If a shut-off valve is not located on the cold water supply line, shut off the main water supply to your home.
2. Locate an area under sink to place the Base. The Base should be located directly under the area where the Dedicated Drinking Water Faucet is installed.
3. Locate the shut-off valve on the existing cold water supply line. Using a 5/8" open ended wrench, unthread compression nut located on top of the shut-off valve by turning the wrench counterclockwise.
4. Thread the T-Valve onto shut-off valve using a 3/4" wrench to tighten, then thread compression nut onto T-Valve using 5/8" wrench to tighten (clockwise).
5. Before pushing the White Tubing (which is attached to the Dedicated Drinking Water Faucet) into the "Outlet" Collar located on T-Valve, determine whether it is necessary to shorten Tubing. If so, shorten to desired length before inserting.



6. Cut a 6 in. length from the 5 ft. of Blue Tubing provided. Take this short piece of Blue Tubing and insert one end into the Blue "Outlet" Collar on Lid. Take the remaining Blue Tube end and push it into the "Inlet" Collar on Monitor.
7. Before pushing the Blue Tubing (which is attached to the Dedicated Drinking Water Faucet) into the "Outlet" Collar on Monitor, determine whether it is necessary to shorten Tubing. If so, shorten to desired length before inserting.
8. Before pushing the Red Tubing (which is attached to the Dedicated Drinking Water Faucet) into the Red "Inlet" Collar on Lid, determine whether it will be necessary to shorten Tubing. If so, shorten to desired length before inserting.
9. Insert Monitor Cable Connector into Cable Port located on Monitor.



IMPORTANT Give all Tubes a gentle tug at the point where they make a connection. This will ensure they are firmly seated and will not come out.

10. Slowly turn cold water supply "ON" and turn the Lever on Dedicated Drinking Water Faucet downward. Water will begin filling the System. Upon initial startup, the Monitored Beauty Ring will begin blinking GREEN, YELLOW and RED five (5) times before continuing to blink GREEN, indicating peak operational performance. Check that all hose, clamp and Housing connections are tight and do not leak.
11. When using your System for the first time, or whenever a new Cartridge is installed, allow the System to flush into the sink for fifteen (15) minutes. This will expel trapped air and condition the Filter Cartridge for normal use. (This water may be used to water your plants.)

CONGRATULATIONS! Your new FrescaPure™ System is now ready for use!

REPLACING THE FILTER CARTRIDGE: UNDER-COUNTER SYSTEM

The most important part of maintaining your new FrescaPure™ Drinking Water System is replacing the Cartridge on a regular interval. To ensure best results, the Cartridge should be replaced upon the first occurrence of the following conditions:

- Annually
- When the Monitored Beauty Ring begins flashing RED
(indicating the rated capacity has been reached)
- When the flow rate diminishes
- When you notice a taste or odor recurrence

IMPORTANT Insist on Genuine, WQA Certified, Royal Prestige Filter Cartridges. Only Genuine, Royal Prestige Cartridges have been tested and certified by the Water Quality Association to ensure the performance represented in the Performance Data Sheet. Failure to use Royal Prestige Filter Cartridges and replacement components will invalidate your warranty.

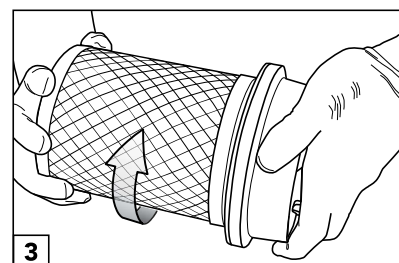
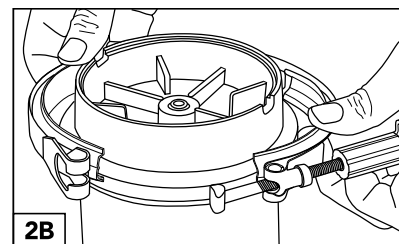
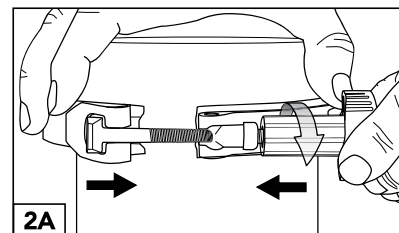
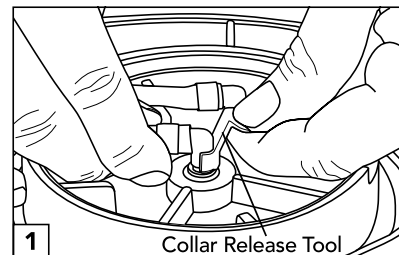
NOTE To release Tubing Fittings from Collars, a Collar Release Tool has been provided for your convenience.

1. Turn "OFF" the cold water supply. Using the Tool provided, depress Red Collar on Lid, while pulling upward on the Red Tubing at the same time. Repeat this procedure to remove the Blue Tubing from Lid.
2. Place System in sink. Turn Knob counter-clockwise to loosen Clamp. Press Knob forward to unlatch T-Bolt from Clamp. Once Clamp is removed, lift Lid upward. This step will expose the Filter Cartridge.

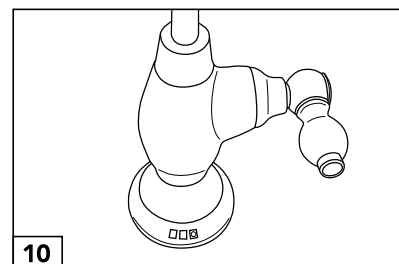
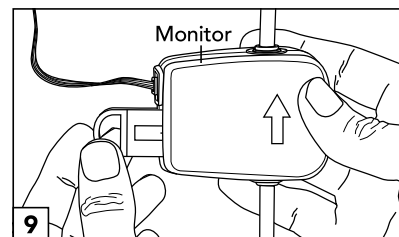
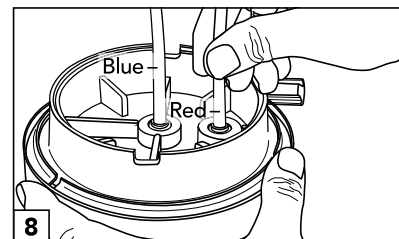
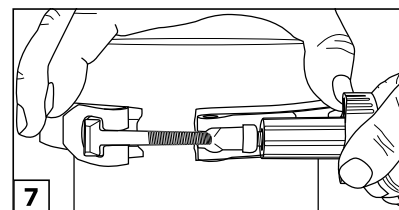
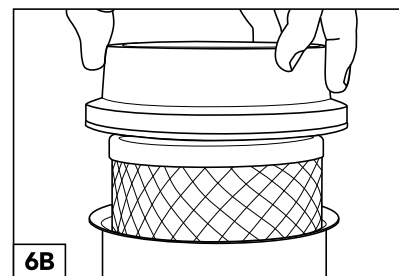
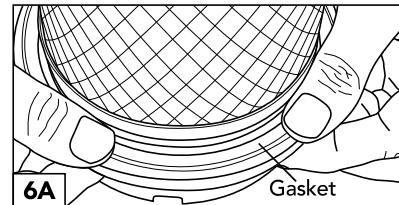
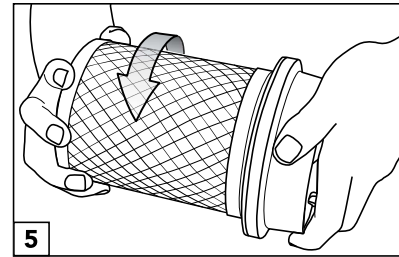
RECOMMENDATION Rubber gloves should be worn to avoid contact with contaminants removed by System.

3. While holding Lid, turn Cartridge counter-clockwise to remove. Wrap in newspaper and discard with normal refuse.
4. Wash inside of Housing and Lid with warm water and a mild dishwashing detergent. Rinse well and dry with a clean cloth.

CAUTION Do not use abrasive pads or abrasive cleaners (including cleaners containing bleach) as this will result in scratching and damage to your System.



5. Remove sanitary plastic wrap from the new Filter Cartridge. Thread new Cartridge clockwise onto Lid until you feel resistance. Make an additional quarter turn. **DO NOT over-tighten.**
6. Make certain Gasket is firmly seated onto Lid. With new Cartridge connected to Lid, lower Cartridge into Housing and align Lid with Housing.
7. Place Clamp around Lid and Housing. Push Knob forward to latch T-Bolt. Tighten Knob.
8. Push the Blue Tube end into Blue "Outlet" Collar located on Lid. Push the Red Tube end into Red "Inlet" Collar located on Lid. Tug both Tubes lightly to ensure they are securely in place. Re-position System under sink.



IMPORTANT ONLY REMOVE BATTERY SHUTTLE AT TIME OF CARTRIDGE REPLACEMENT. Removing Battery Shuttle prematurely may result in a loss of stored data. A new Battery and Battery Shuttle is included with every Genuine, WQA Certified, Royal Prestige Filter Cartridge.

9. Remove Battery Shuttle from Monitor and discard. Insert new Battery Shuttle.
10. Slowly turn cold water supply "ON" and turn the Lever on Dedicated Drinking Water Faucet downward. Water will begin filling the System. Upon initial startup, the Monitored Beauty Ring will begin blinking GREEN, YELLOW and RED five (5) times before continuing to blink GREEN, indicating peak operational performance. Check that all hose, clamp and housing connections are tight and do not leak.
11. When using your System for the first time, or whenever a new Cartridge is installed, allow the System to flush into the sink for fifteen (15) minutes. This will expel trapped air and condition Filter Cartridge for normal use. (This water may be used to water your plants.)

TROUBLESHOOTING

CONDITION: Water continues to run from the Dedicated Drinking Water Faucet even after turning the water "OFF".

REASON: The Dedicated Drinking Water Faucet does not shut off like a standard faucet. It has a valve that shuts off pressure in front of the System, and like a garden hose, the residual pressure will take time to drain.

SOLUTION: This condition is normal and no action is required. However, to minimize the "run on" effect, follow the flushing instructions for a minimum of 15 minutes when your System is new and each time a new Filter Cartridge is installed.

CONDITION: Water is flowing slowly from the System, yet the Monitored Beauty Ring is still flashing GREEN.

REASON: Excessive amounts of particles in the water supply may have caused premature plugging of the Filter Cartridge.

SOLUTION: The Cartridge and Battery Shuttle must be replaced due to poor water conditions in your area.

CONDITION: White sediment is in my filtered water.

REASON: There is a presence of calcium carbonate in your main water supply. This will occur any time the filter water is boiled or frozen and then melts.

SOLUTION: This condition is normal and no action is required

CONDITION: The YELLOW lamp on the Monitored Beauty Ring is flashing.

REASON: The Cartridge is reaching the end of its rated capacity and will need to be replaced soon. Order a Genuine, WQA Certified, Royal Prestige Filter Cartridge now so that you will have it when the RED lamp begins flashing, signaling it is time to replace the Cartridge.

SOLUTION: Replace Cartridge and Battery Shuttle when RED lamp on Monitored Beauty Ring begins flashing.

TROUBLESHOOTING

CONDITION: Water is leaking between a tube or fitting and a Collar.

REASON #1: The tube or fitting is not completely inserted into Collar.

SOLUTION: Press tube/fitting firmly into Collar.

REASON #2: Tube end has been damaged, elongated or was not cut squarely.

SOLUTION: Depress Collar using the Tool provided and pull Tube at the same time to remove. Observe the end of the tube to determine condition. Cut a short section of the tube end off to correct condition. Re-install Tube into Collar by pressing firmly into place.

Genuine Royal Prestige® WQA Listed Replacement Cartridge's may be purchased from your Authorized Royal Prestige Distributor.

For purchase information, you may also call the Royal Prestige Customer Service Center. (See page 20.)

CUSTOMER SERVICE

For customer service contact information, please refer to page 20.

For warranty service, please refer to the warranty document included with your unit.

SERVICE CENTERS

For warranty service, please send the product to our Service Center:

USA

HY CITE ENTERPRISES, LLC
Royal Prestige Service Center
2115 Pinehurst Drive
Middleton, WI 53562
PHONE: 1-800-279-3373
Bilingual (English & Spanish)

COLUMBIA

HY CITE ENTERPRISES
COLUMBIA S.A.S.
Calle 90 No. 128, PISO 3
Chico, Bogotá, Columbia
PHONE: (571) 745-8694
018000 128694

ARGENTINA

HY CITE BA S.R.L.
Suipacha 552, Piso 1,
Capital Federal, Buenos Aires,
Argentina, C.P. 10008
PHONE: 0800 4442904

MÉXICO

HY CITE MÉXICO S. DE R.L. DE CV.
Avenida Tesistan # 2450
Nave 18 Colonia El Tigre
Zapopan Jalisco C.P. 45134M
PHONE: 01-800-111-1116

PERÚ

HY CITE PERÚ S.R.L.
Calle Cantaurías #160, 170, 176
Oficina #702 - Edificio Cantuarías
Miraflores, Lima-Perú
PHONE: (511) 243-7756
(511) 243-7768

BRAZIL

ROYAL PRESTIGE DO BRASIL
COMÉRCIO E IMPORTAÇÃO
DE UTILIDADES DOMÉSTICAS LTDA
Alameda Araguaia
2.104 - 22º Andar Salas 223 A/224 A
Centro Empresarial
Araguaia Corporate - Alphaville
Barueri - SP, CEP 06455-000
PHONE: (11) 4191-5026

For detailed warranty information, visit www.royalprestige.com:



ROYAL
PRESTIGE®

Exclusively distributed by:

HY CITE ENTERPRISES, LLC

333 Holtzman Rd., Madison, WI 53713 • 1-800-279-3373

www.RoyalPrestige.com • © Hy Cite Enterprises, LLC • Printed in USA

Reproduction of this printed material is prohibited.

Due to continuing product development
and research, final specification and/or
appearance may vary.